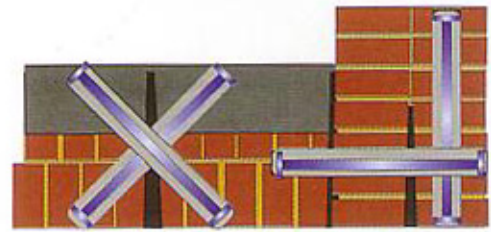
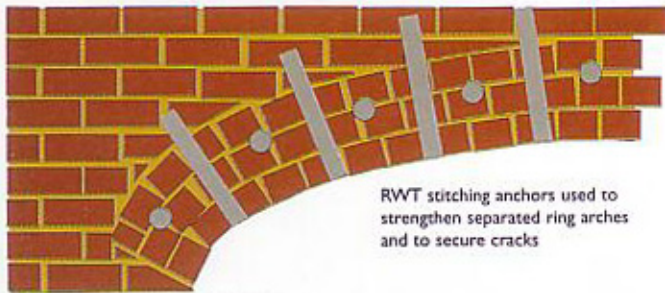
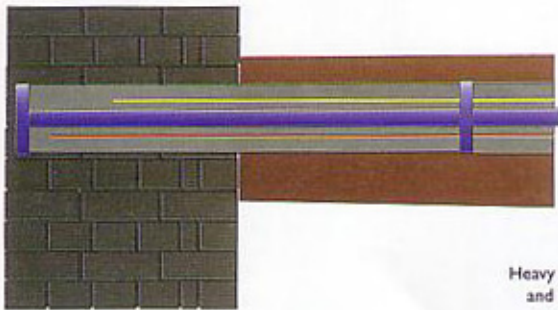


Civil Applications

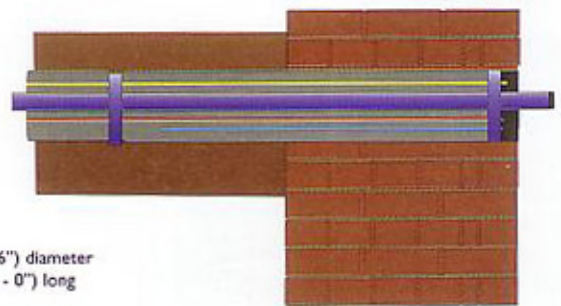
Bridge repairs



section



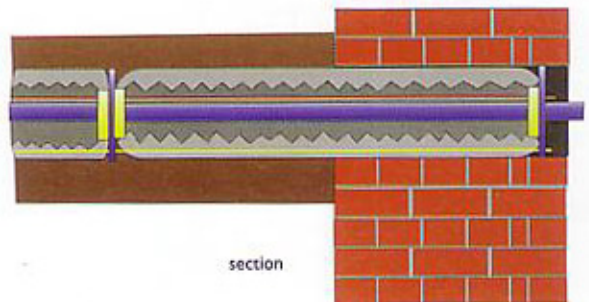
section



Heavy duty anchor 150mm (6") diameter and up to 30 metres (100' - 0") long

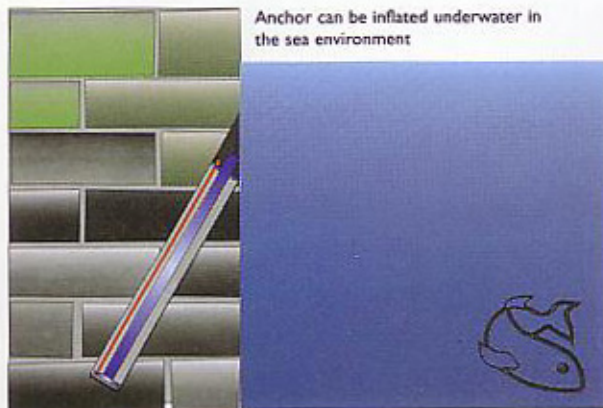


Ground anchor doubly protected

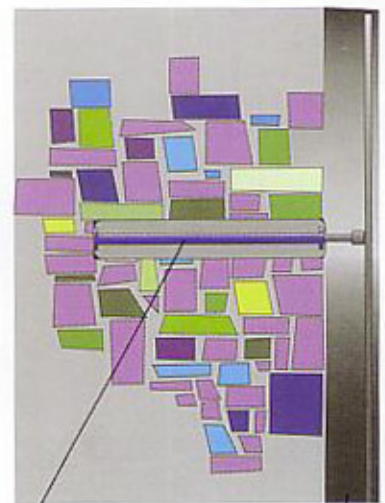


section

Harbour wall stitching



Plan



Repairs to masonry wall. The RWT stitching anchor stabilizes the wall and provides an attachment to add external reinforcement

Sprayed concrete